

# TATES

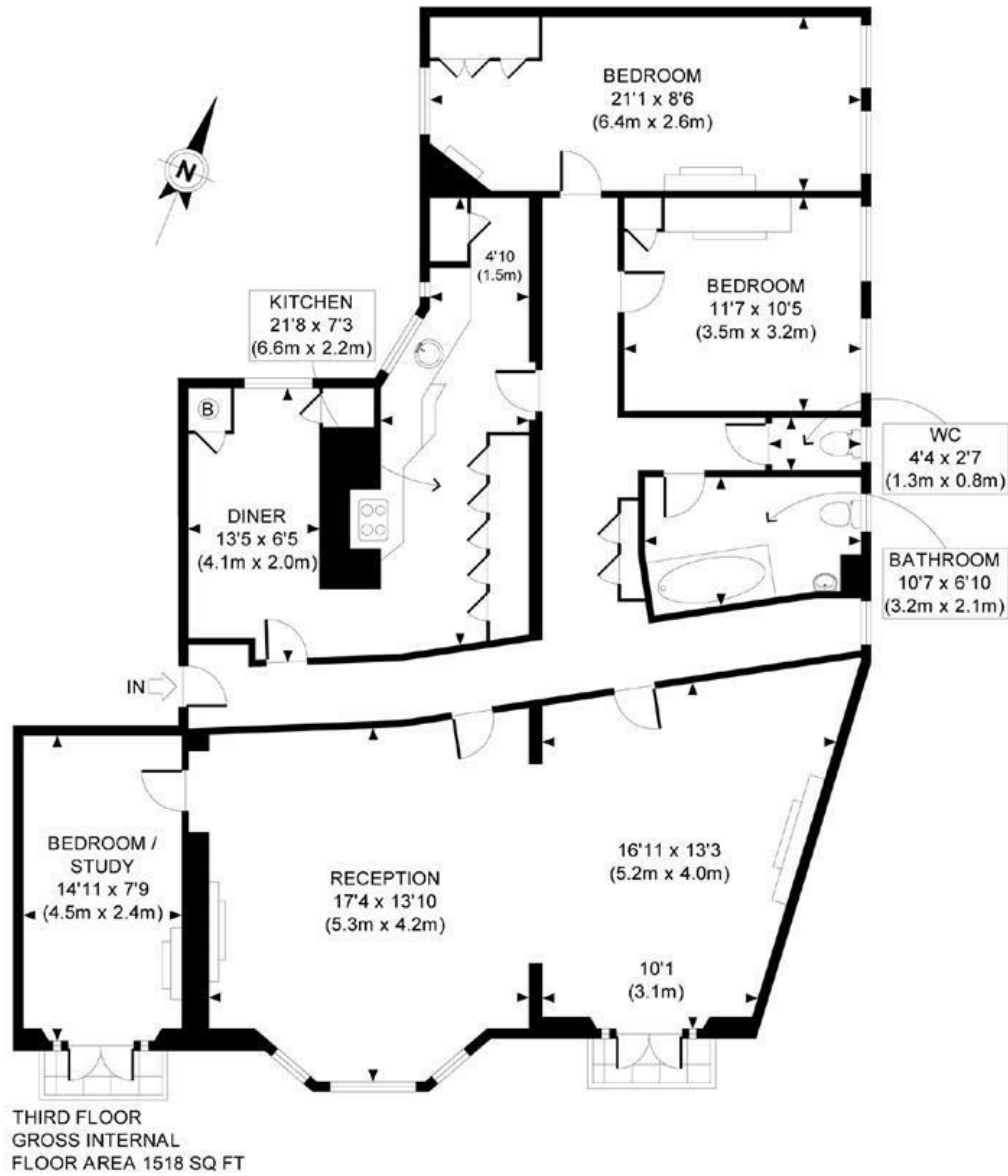
020 7602 6020



## Glyn Mansions, Hammersmith Road, London W14 8XH

**£1,250,000**

- Three bedrooms
- Close to tube & local amenities
- Third floor
- Close to Kensington High Street
- Double reception room
- Red brick mansion flat
- Balcony
- Energy Efficiency Rating Current Band: D



APPROX. GROSS INTERNAL FLOOR AREA 1518 SQ FT / 141 SQ M  
 Ref: TATES - 250110 Copyright **photoplan.co.uk**  
 Floorplans are for identification and guideline purposes only, not to scale.  
 Compliant with RICS code of measuring practice.

Whilst these particulars are produced in good faith and are believed to be correct, no guarantee is given, nor any responsibility accepted, by Tates nor by any of its representatives, for their accuracy. The particulars do not constitute part of any offer or contract, and it is recommended that such things as measurements, condition, structure, services, appliances, fixtures and fittings and facilities are all independently assessed by the prospective purchaser or renter of the subject property prior to committing to any contract.

Energy Efficiency Rating		
	Current	Potential
Very energy efficient - lower running costs		
(92 plus) <b>A</b>		
(81-91) <b>B</b>		
(69-80) <b>C</b>		
(55-68) <b>D</b>	<b>60</b>	<b>65</b>
(39-54) <b>E</b>		
(21-38) <b>F</b>		
(1-20) <b>G</b>		
Not energy efficient - higher running costs		
<b>England &amp; Wales</b>	EU Directive 2002/91/EC	

135 Hammersmith Road, West Kensington, London W14 0QL    mail@tatesestates.co.uk    [tatesestates.co.uk](http://tatesestates.co.uk)

Tates (Agents) Ltd. Registered in England and Wales No. 02356337  
 Registered Office: Imperial House, 8 Keane Street, London WC2B 4AS

